

# **Nylofor Square & rectangular posts**

Installation manual

**EN**

# Content

---

## **1. Components of the fencing systems**

1. The posts
2. Fixators and tools
3. The Nylofor panels

## **2. Installation of the fencing systems**

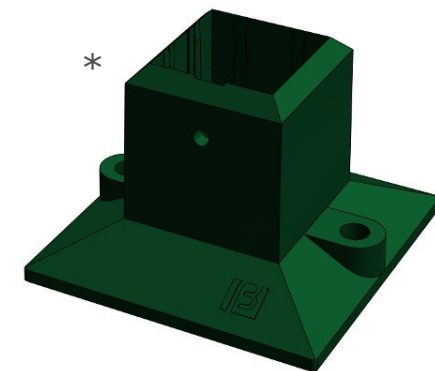
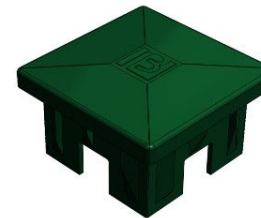
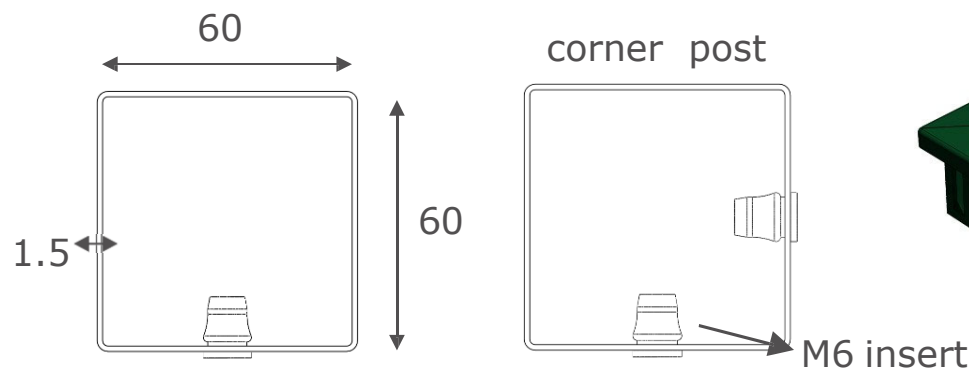
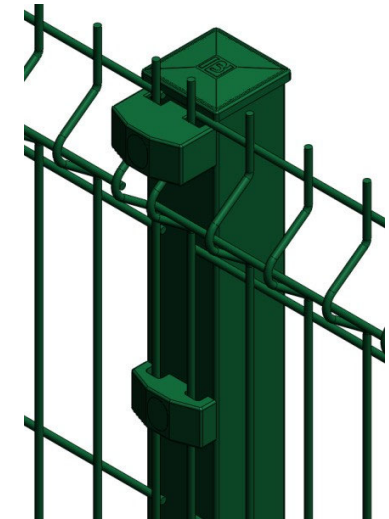
1. Foundations
2. Installation of posts & panels

## **3. Options**

# 1. Components of the fencing systems

## 1. The posts

- Post with section 60x60x1.5mm are available for panels from 0.6 to 2.4 meters
- For installations higher than 2.4m, rectangular posts with profile 80x60x2,5mm, or 120x60x3mm are used
- The posts are galvanised inside and outside and polyester coated
- This type of post can be installed with all Nylofor panels
- The posts are equipped with M6 inserts to attach the panels with clamps and security bolts
- Each post is fitted with a PP post cap
- Posts with inserts in 2 adjacent sides are available to make corners
- Installation on a base plate is possible in 2 ways: by gluing an aluminium base plate, or welding a steel base plate to the post

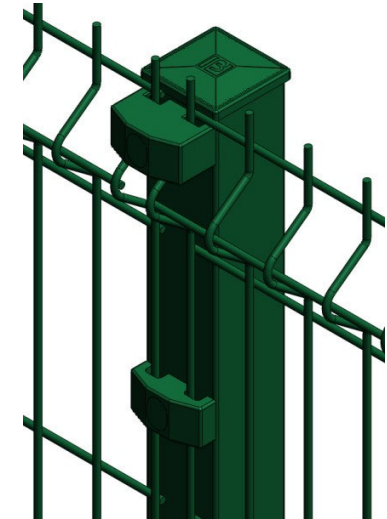


\* Installation on an aluminium base plate is not possible in combination with fillings such as Screeno Line, Collfort...

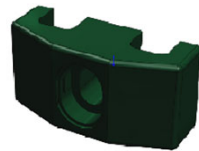
# 1. Components of the fencing systems

## 2. Fixators and tools

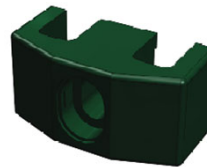
- PA fixators with caps, to be attached with M6 security bolts (ISO 7380)
- Different types are available, depending on the type of panel being installed



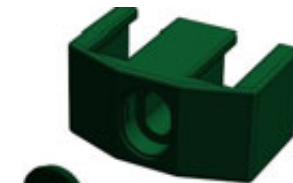
- 2D
- 3D INT\*
- 3D Pro INT\*



- 2D Super
- 3D Super
- 3D Pro XL

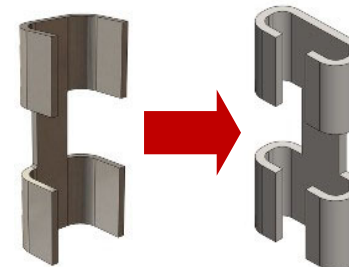


- F



- 2D
- 3D
- 3D Pro
- 3D Pro XL

- A bracket (in stainless steel) is used to attach one panel on top of another or for two panels in a sharp angle (only Nylofor 3D and Nylofor Medium)









\*INT = intermediate = clamps that are not positioned in a nose

# 1. Components of the fencing systems

## 3. The Nylofor panels

– Range:

| Type      | 3D Pro  | 3D   | 2D  | 3D Super  | F   | 2D Super  |
|-----------|---|--|---|---|---|---|
| Height    | 1,03 – 2,43 m   | 1,03 – 2,43 m  | 1,03 – 2,03 m   | 1,63 – 2,43 m   | 0,63 – 2,03 m   | 1,03 – 2,43 m   |
| Width     | 2,5 m   | 2,5 m  | 2,5 m   | 2,5 m   | 2,5 m   | 2,5 m   |
| Wire dia  | H: 5mm<br>V: 5mm  | H: 5mm<br>V: 5mm   | H: 2x6mm<br>V: 5mm  | H: 8mm<br>V: 5mm  | H: 15x6mm<br>V: 5mm   | H: 2x8mm<br>V: 6mm  |
| Mesh size | 200 x 50 mm   | 200 x 50 mm  | 200 x 50 mm   | 200 x 50 mm   | 200 x 50 mm   | 200 x 50 mm   |
| Nose type | 1 wire  | 1 wire   | none  | 1 wire  | none  | none  |
| Coating   | GALV+PVC<br> | GALV+PES<br> | GALV+PES<br> | GALV+PES<br> | GALV+PES<br> | GALV+PES<br> |

| Type          | 3D Pro | 3D | 2D | 3D Super | F | 2D Super |
|---------------|--------|----|----|----------|---|----------|
| Square        | X      | X  | X  | X        | X | X        |
| Bekafix       | X      | X  | X  | X        | X | X        |
| Bekafix Super | X      | X  | X  | X        | X | X        |
| Quixolid plus | X      | X  | X  | X        | X | X        |

## 2. Installation of the fencing systems

---

### 1. Foundations

- To obtain the best result, it is advisable to level the ground over the whole length of the fence
- For correct positioning, maintain the centre-centre distances. (with a tolerance of +/- 5 mm)
- The distance is determined by the post system and the type of panel being installed

| Post system | Centre-centre distance |
|-------------|------------------------|
| Square      | 2530 mm (*)            |

(\*) + 500 mm for type 3-M

- Align the fence line
- To determine the dimensions of the foundations it is advisable to consult a specialised engineer to evaluate wind load and solar conditions and any other factors requiring specialist opinion (concrete quality directive B30)
- In case of direct installation the post needs to be supported as long as necessary



## 2. Installation of the fencing systems

---

### 2. Installation of posts & panels

- Installation principle: when placing square posts, first all the posts can be placed and then the panels can be attached.

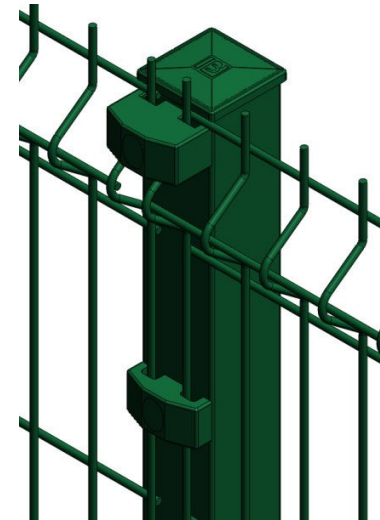
#### **ALIGNING THE POSTS**

##### Installation on an even surface

- Place a post before the first post of the fence and another behind the last post. Connect those posts with two guide ropes
- The lower guide rope should be between 20 and 40 cm above the ground. Now align all inserts with the upper guide rope.

##### Installation on a sloping surface

- Place a guide rope for the same heights. In case of a difference in height, place a supplementary guide rope at the height of the upper insert.

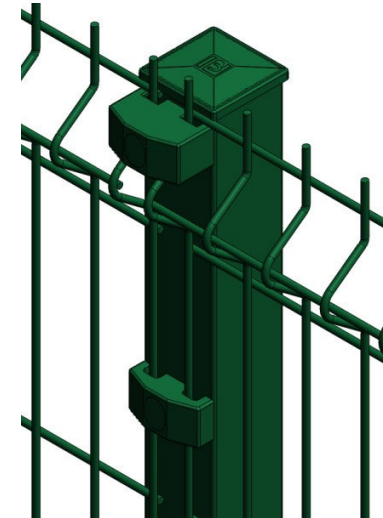


## 2. Installation of the fencing systems

### 2. Installation of posts & panels

#### PLACEMENT OF THE POSTS (USE A TEMPLATE)

- A template makes it much easier to place the posts correctly: a mould of 2530 mm needs to be used to see if the posts are placed at a correct distance (measured center-center, with a tolerance of +/- 5 mm)
- The template must be made by the installer and must have 2 recesses into which the posts fit perfectly
- Place the posts, correctly aligned (vertically and horizontally) and with the correct distance between them. For end posts and corner posts the distance is 3 cm smaller
- A spirit level needs to be used to ensure the posts are placed perfectly vertical



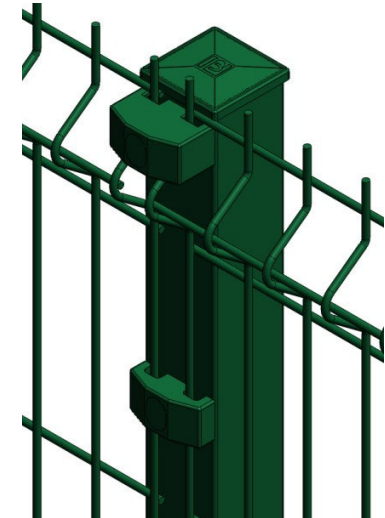


# 2. Installation of the fencing systems

## 2. Installation of posts & panels

### INSTALLATION OF THE PANELS

- Join two panels together on an intermediate post at the correct height
- Place a clamp in the upper insert of the post and tighten the security bolt halfway
- Now place an additional clamp in the lower insert and tighten the security bolt halfway
- Repeat this procedure for all intermediate posts and finish with the corner post
- Now place the bolts into the other clamps and tighten all bolts completely and firmly
- Now cover the clamp holes with a cap



### FIXATORS PER POST

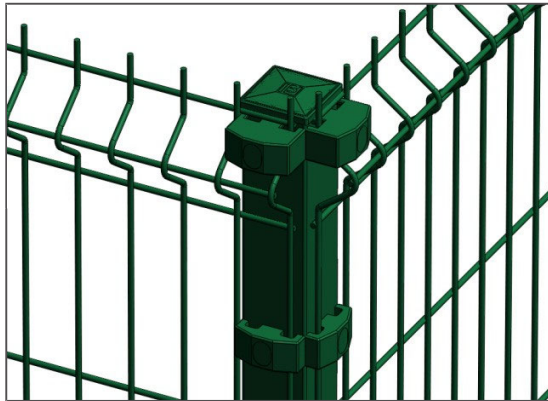
| Panel height | Number of fixators |
|--------------|--------------------|
| 630mm        | 3                  |
| 1030mm       | 3                  |
| 1230mm       | 4                  |
| 1430/1530mm  | 4                  |
| 1630/1730mm  | 5                  |
| 1830/1930mm  | 5                  |
| 2030mm       | 6                  |
| 2430mm       | 7                  |

## 2. Installation of the fencing systems

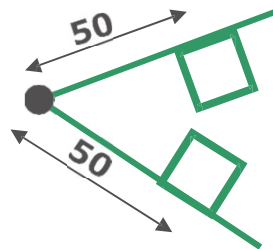
### 2. Installation of posts & panels

#### MAKING CORNERS

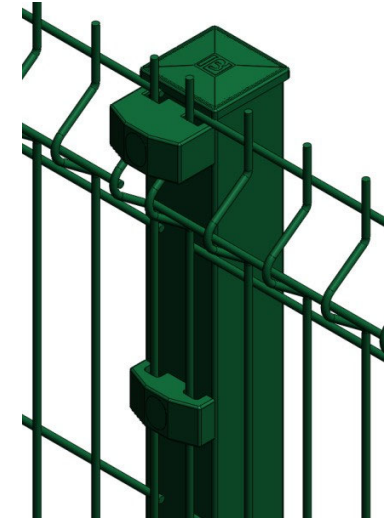
- RIGHT ANGLE



- ACUTE/OBTUSE ANGLE  
Place two intermediate posts 50 cm from the corner.



Only for Nylofor 3D / 3D Pro

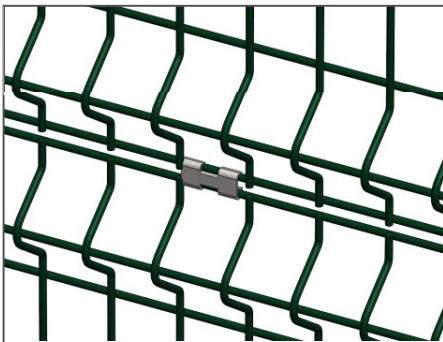


## 2. Installation of the fencing systems

### 2. Installation of posts & panels

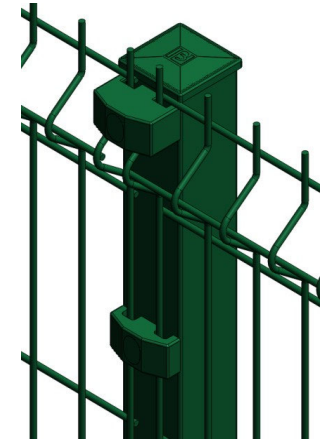
#### PANELS ON TOP OF EACH OTHER

- Connect the panels using 3 brackets per panel



#### SLOPES

- On slopes extra fixators must be placed



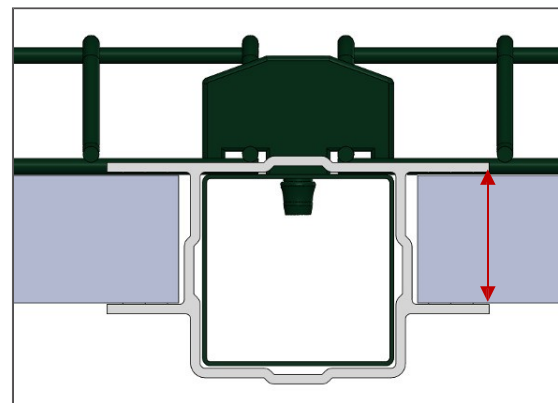
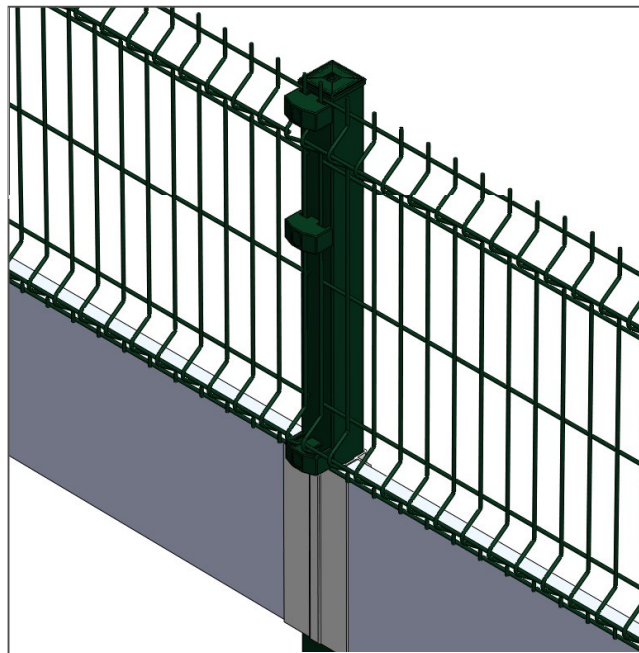
- Measure the area accurately compared to the zero level
- Do this in different places
- The zero level can be determined by means of a laser or similar instrument
- Determine all differences in height on the fence line
- For slopes of more than 15% posts must be placed closer together. Shorten the panels and repair the ends with zinc paint and polyester paint

## 2. Installation of the fencing systems

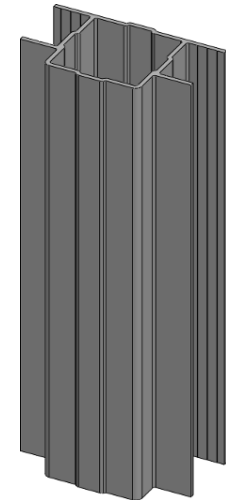
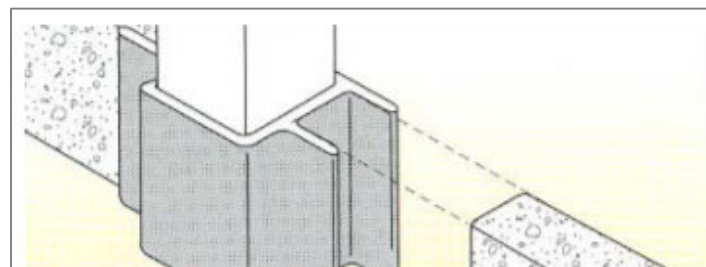
### 2. Installation of posts & panels

#### INSTALLATION WITH CONCRETE SLABS

- Use concrete slab supports for 60x60 posts (hard PVC)



width 4cm -  
height 30cm

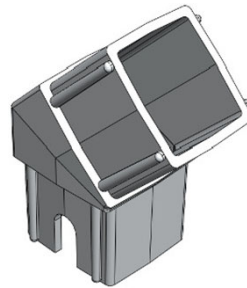


# 3. Options

---

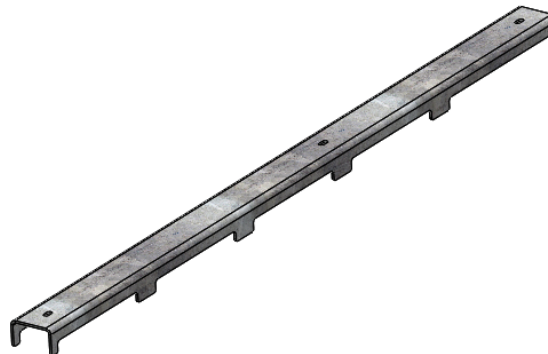
## ALUMINIUM CONNECTOR

- For extra security
- For posts 60x60 to connect the vertical part of the post and the bent arm of the security fence



## SECURITY PROFILE

- For extra security
- Can be used to attach Nylofor F, 2D or 2D Super onto 60x60 posts



---

**IB BETAFENCE**