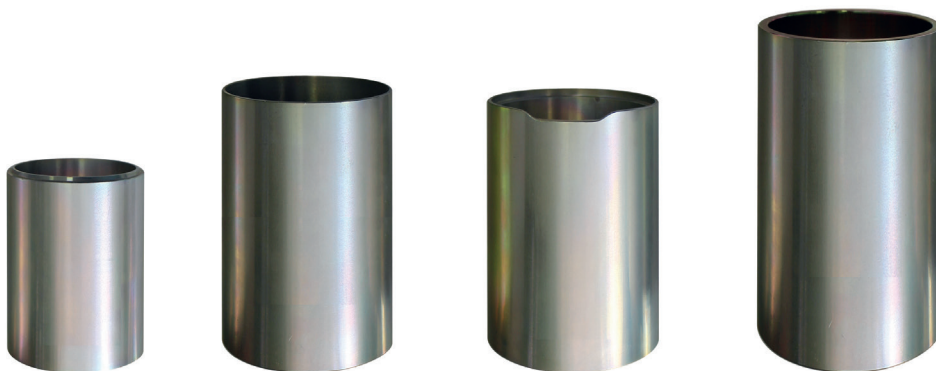


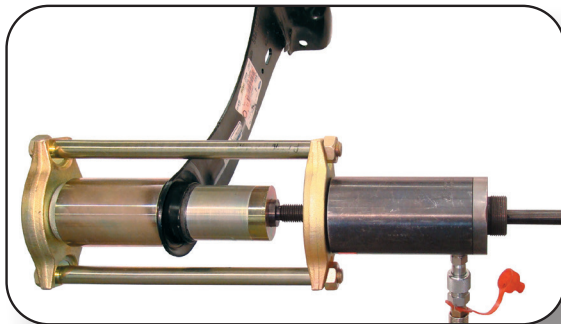


KL-0610-13..Series

Set of Sleeves for Rear Axle Trailing Arm Silent Block
Ford, Volvo, Mazda



Operating instructions EN
⚠ Read and understand before use!



www.gedore-automotive.com



GEDORE Automotive GmbH

Breslauer Straße 41
78166 - Donaueschingen
Postfach 1329
78154 Donaueschingen - GERMANY

☎ +49 (0) 771 / 8 32 23-0
☎ +49 (0) 771 / 8 32 23-90
✉ info.gam@gedore.com
🌐 gedore-automotive.com

GEDORE TOOLS, INC.

Only for USA, Canada & Mexico / Sólo para EE.UU., Canadá y México
Seulement pour les USA, le Canada et le Mexique
7187 Bryhawke Circle, Suite 700
North Charleston, SC 29418, USA

☎ +1-843 / 225 50 15
☎ +1-843 / 225 50 20
✉ info@gedoretools.com
🌐 gedore.com

Version 1 - 01/2023



ENGLISH

EN

EN

Manufacturer's address

GEDORE Automotive GmbH

Breslauer Straße 41 // 78166 Donaueschingen - GERMANY

☎ +49 (0)771/83223-71 // ✉ info.gam@gedore.com

Imprint

In the course of improvement and adaptation to the state of the art, we reserve the right to make changes with regard to appearance, dimensions, weights and properties, and performance.

This does not imply any claim to correction or subsequent delivery of already delivered products. Deletions can be made at any time without any legal claim arising.

Instructions for use and safety are not binding. They never substitute for any legal or trade association regulations.

We do not accept any liability for printing errors.

Any reproduction, in whole or in part, requires the prior written consent of **GEDORE Automotive GmbH**.

All rights reserved worldwide. © Copyright by **GEDORE Automotive GmbH**, Donaueschingen (GERMANY)

We refer to our general terms and conditions which
can be found in the imprint at:

www.gedore-automotive.com



Contents

1. FOR YOUR SAFETY	4
1.1 Target group.....	4
1.2 Obligations of the owner.....	4
1.3 Intended use	4
1.4 Reasonably foreseeable misuse	4
1.5 Personal protective equipment.....	5
1.6 Labelling of the warnings.....	5
1.7 Basic warnings	5
1.8 Basic safety instructions	6
1.9 Work environment	7
1.10 Emissions.....	7
1.11 Maintenance	7
1.12 Troubleshooting.....	7
2. PRODUCT DESCRIPTION	8
2.1 KL-0610-131 A - set of sleeves Ford Focus I, II, III	8
2.2 KL-0610-134 - set of sleeves Ford Focus III	8
2.3 Specifications.....	8
3. PREPARATION	9
3.1 Checking the scope of delivery	9
3.2 Assembling drive parts	9
3.3 Preparing the pressing device	10
3.4 Preparing the vehicle	10
4. EXAMPLE OF USE	10
4.1 Removing the silent block	10
4.2 Installing the silent block	11
5. CARE AND STORAGE	11
6. REPAIR	11
7. ENVIRONMENTALLY FRIENDLY DISPOSAL	11

1. FOR YOUR SAFETY



Read and understand these operating instructions **before you use** the pressing device (*the set of sleeves*) and observe all safety instructions and warnings! Misuse can result in **DEATH** or **SEVERE INJURIES**! These operating instructions are an integral part of the pressing device. Keep them at a safe place for future reference, and always pass them on to subsequent users of the pressing device! The pressing device complies with the recognised rules of technology as well as with the relevant safety regulations!

1.1 Target group

These operating instructions are **exclusively** intended for skilled personnel in specialised motor vehicle workshops!

The pressing device **may only be** used by skilled personnel in specialised motor vehicle workshops who are familiar with the basic regulations on work safety and accident prevention!

✔ **Never** allow unauthorised, inexperienced persons, minors and children, or persons with limited physical, sensory, and mental abilities to use the pressing device!

1.2 Obligations of the owner

Pursuant to the German Ordinance on Industrial Safety and Health (*BetrSichV*), employers are obliged to provide their employees with safe work equipment in accordance with the recognized rules of technology and the relevant safety regulations!

✔ The owner of the pressing device **must** ensure that **only** trained personnel in specialised vehicle workshops use the pressing device!

✔ The owner of the pressing device **must** ensure that the operating instructions are available to the user and that the user has completely read and understood the operating instructions **before** using the pressing device!

✔ The owner of the pressing device **must** ensure that the user is familiar with the basic regulations on work safety and accident prevention and that the personal protective equipment is available to him/her!

1.3 Intended use

The pressing device ...

✔ **may only** be used for pressing silent blocks on the rear axle trailing arms in and out!

✔ **may only** be used on vehicles as specified in **Chapter 2. - Product description!**

✔ **may only** be used to a **max. load of 12 tons!**

✔ **may only** be used with a manual drive or a manually operated **GEDORE Automotive** hydraulic cylinder/pump combination with a pressure gauge for safe pressure control!

✔ **may only** be used in the way described in these operating instructions!

⚠ Any other use can result in **DEATH** or **SEVERE INJURIES**!

1.4 Reasonably foreseeable misuse

The pressing device ...

✔ **must never** be used with a machine-operated drive or a machine-operated hydraulic cylinder/pump combination!

✔ **must never** be used for batch processing (numerous pressing in/out processes within a few minutes)!

✔ **must never** be used without a securing device against dropping!

✔ **must never** be used with a bridged, modified, or removed safety device!

✔ **must never** be modified, converted, or used for other purposes without authorisation!

⚠ The pressing device **may only** be used in the way described in **Chapter 1.3 - Intended use!** Any other use can result in **DEATH** or **SEVERE INJURIES**!

1.5 Personal protective equipment

For your safety, **always** wear personal protective equipment when using the pressing device! The pressing device can bring about mechanical hazards, such as crushing, cutting, and shock injuries.



Always wear **EYE PROTECTION** (see DIN EN 166, OSHA 29 CFR 1910.133, ANSI Z87) when using the pressing device to protect yourself against flying parts or particles!

When using the pressing device, flying parts or particles can cause **SEVERE INJURIES** to your **eyes**!



Always wear **PROTECTIVE GLOVES** (e.g. DIN EN 388, OSHA 29 CFR 1910.138, ANSI 105) when using the pressing device to protect yourself against sharp edges and crushing between parts!

When working with the pressing device, sharp edges and crushing between parts can cause **SEVERE INJURIES** to your **hands**!



Always wear **SAFETY SHOES** (e.g. DIN EN ISO 20345, OSHA 29 CFR 1910.136, ANSI Z41) when using the pressing device to protect yourself against dropping parts!

When working with the pressing device, dropping parts can cause **SEVERE INJURIES** to your **feet and toes**!

EN

1.6 Labelling of the warnings

Warnings warn of potential **hazards**. **Always** observe these warnings to avoid **DEATH** or **INJURIES**!

For better differentiation, warnings in these operating instructions are classified as follows:

Warning sign	Meaning
	Indicates a hazardous situation which, if not avoided, could cause DEATH or SEVERE INJURIES .
	Indicates a hazardous situation which, if not avoided, could cause MODERATE or MINOR INJURIES .
	Indicates a situation which, if not avoided, can cause damage to the tool or an object in its vicinity.
	Note on important information and useful tips.

1.7 Basic warnings

WARNING - Danger to life from MISUSE

MISUSE can cause the pressing device to slip, break and thus drop or be hurled about. This can cause **DEATH** or **SEVERE INJURIES**!

Read and understand these operating instructions **before using** the pressing device, and observe all safety and warning instructions for **safe use**!

Always work with the pressing device in accordance with the basic regulations on work safety and accident prevention!

Only use the pressing device as described in these operating instructions!

Always observe the vehicle-specific application procedures in the vehicle manufacturer's repair guide!

Never use the pressing device if it is damaged or has loose parts or unauthorised modifications!

Never use the pressing device with an inadmissible drive. Drive it **exclusively** with a manual drive or a manually driven **GEDORE Automotive** hydraulic cylinder/pump combination with pressure gauge for safe pressure control!

Never use the pressing device for batch processing with numerous pressing in/out processes within a few minutes!

Always wear your personal protective equipment (*safety goggles, protective gloves, safety shoes*) during work!

Never hit the pressing device with a hammer or anything similar!

⚠ WARNING - Danger to life from OVERLOAD

OVERLOAD can cause the pressing device to slip, break and thus drop or be hurled about. This can cause **DEATH** or **SEVERE INJURIES!**

- ✔ **Never** exceed the **maximum loading capacity** of the pressing device!
- ✔ **Never** use the pressing device if it is damaged or has loose parts or unauthorised modifications!
- ✔ **Never** use the pressing device with a machine-operated drive or a machine-operated hydraulic cylinder / pump combination!
- ✔ Use the pressing device **exclusively** with a manual drive or a manually operated GEDORE Automotive hydraulic cylinder / pump combination with a pressure gauge for reliable pressure control!
- ✔ **Never** use the pressing device for batch processing with numerous pressing in/out processes within a few minutes!
- ✔ **Always** wear your personal protective equipment (*safety goggles, protective gloves, safety shoes*) during work!

⚠ WARNING - Danger of injury from DROPPING

The pressing device can **DROP** when it is used overhead, for example. This can cause **DEATH** or **SEVERE HEAD INJURIES!**

- ✔ **Always** ensure that the pressing device is securely attached to the rear axle trailing arm!
- ✔ **Always** secure the pressing device against dropping, for example using the safety retaining belt - **KL-0040-2890** or the mounting device - **KL-0040-288!**
- ✔ **Never** leave the pressing device unattended on the vehicle!
- ✔ **Always** wear your personal protective equipment (*safety goggles, protective gloves, safety shoes*) during work!

ATTENTION - Risk of DAMAGE

There is a risk of **DAMAGING** the vehicle, the rear axle trailing arm and the silent block.

- ✔ **Always** observe the installation position of the silent block specified by the vehicle manufacturer!
- ✔ **Always** observe vehicle-specific application procedures in the vehicle manufacturer's repair guide.
- ✔ **Prior to each use**, check moving parts and the spindle of the pressing device for sufficient lubrication. Lubricate them **at regular intervals** with molybdenum disulphide paste (*GEDORE Automotive Molybdenum Disulphide Paste - KL-0014-0030*)
- ✔ **Never** use the pressing device for batch processing with numerous pressing in/out processes within a few minutes!
- ✔ **Never** clamp the pressing device in a vice.

1.8 Basic safety instructions

For your safety, **always** observe the following safety precautions when using the pressing device in order to avoid injuries and material damage caused by misuse or unsafe handling.

- ✔ Read and understand these operating instructions **before using** the pressing device and observe all safety and warning instructions for **safe use!**
- ✔ **Always** observe the vehicle-specific application procedures in the vehicle manufacturer's repair guide!
- ✔ **Always** work with the pressing device in accordance with the basic regulations on work safety and accident prevention!
- ✔ **Never** use the pressing device when you are tired or under the influence of alcohol, drugs, or medicaments!
- ✔ **Before each use**, check the pressing device **carefully** for damage, loose parts or unauthorised modifications. **Never** use it if you notice any such deficiencies!
- ✔ Use **only genuine GEDORE Automotive** spare parts and accessories!
- ✔ While working with the pressing device, make sure that **no** unauthorised persons are in the immediate environment!
- ✔ **Always** observe the **max. loading capacity** when using the pressing device, and **never** exceed it!
- ✔ **Never** use the pressing device with an unauthorised drive. Drive it **only** with an approved drive!
- ✔ **Always** wear your personal protective equipment (*safety goggles, protective gloves, safety shoes*) during work!
- ✔ Interrupt your work **immediately** if you are unsure about using the pressing device. Contact **GEDORE Automotive GmbH** if necessary!
- ✔ **Always** use the pressing device as intended. Non-compliance will invalidate any warranty claim and may significantly reduce its durability!

1.9 Work environment

For your safety, **only** use the pressing device in a safe working environment.

- ✔ The workplace **must** be clean and tidy.
- ✔ The workplace **must** be sufficiently large and illuminated.
- ✔ The workplace **must** be on a solid and non-skidding floor.
- ✔ The workplace **must** be safeguarded against access of unauthorised persons.
- ✔ The workplace **must** have a room temperature between -10°C and +40°C.

1.10 Emissions

Molybdenum disulphide paste and hydraulic oil can drip or escape when using the pressing device and thus pose a hazard to the environment.

- ✔ **Immediately** remove leaking hydraulic oil as well as excess molybdenum disulphide paste (using oil binding agents or a rag, for example).
- ✔ In case of skin contact with hydraulic oil, clean the affected area **immediately** with degreasing soap and water.
- ✔ Dispose of pollutants such as hydraulic oil and molybdenum disulphide paste in an **environmentally friendly** manner.
- ✔ Safety data sheets *as per (EC) Ordinance No. 1907/2006 about hydraulic oil (Alsus Hyd HLP 32) and molybdenum disulphide paste (MOLYKOTE(R) G-N PLUS PASTE)* can be found on the manufacturer's website in the internet (**World Wide Web**).

1.11 Maintenance

Missing and improper maintenance can cause damage and breakage of the pressing device. This can cause **DEATH** or **SEVERE INJURIES!** Perform maintenance on the pressing device **at regular intervals** and **only** when the device is depressurised and/or de-energised!

Prior to each use:

- ✔ **Prior to each use**, check the pressing device **carefully** for damage, loose parts or unauthorised modifications!
- ✔ **Prior to each use** of the pressing device, check the spindle for contamination and damage. If necessary, clean it and subsequently lubricate it **only** with molybdenum disulphide paste! (For example, **GEDORE Automotive** molybdenum disulphide paste - **KL-0014-0030**)

Every 6 months:

- ✔ Clean and lubricate the spindle on the pressing device **at least every 6 months**, and **only** with molybdenum disulphide paste! (For example, **GEDORE Automotive** molybdenum disulphide paste - **KL-0014-0030**)

Recommended: Every 12 months:

- ✔ Have the pressing device professionally checked **every 12 months** by authorised **GEDORE Automotive GmbH** specialists!

1.12 Troubleshooting

Always ensure that the pressing device is depressurised and free of tension before you start any troubleshooting!

Problem: Hydraulic oil escapes from the hydraulic coupling between hydraulic cylinder and hand pump.

Reason: Hydraulic coupling contaminated or loose.

Remedy: Clean and retighten the hydraulic coupling. Top up lacking hydraulic oil (**HLP 32**) at the hand pump.

Problem: With mechanical drive, the spindle movement on the pressing device is stiff.

Reason: The spindle is contaminated or insufficiently lubricated, or wrong lubricant was used.

Remedy: Clean the spindle, check it for damage, and lubricate it **only** with molybdenum disulphide paste. (For example, **GEDORE Automotive** molybdenum disulphide paste - **KL-0014-0030**)

2. PRODUCT DESCRIPTION

2.1 KL-0610-131 A - Set of sleeves Ford Focus I, II, III

Fits on the silent block of the rear axle trailing arm of Ford Focus (I, II, III), C-MAX (I, II), Grand-C-Max (II), Kuga (I, II), Volvo C30, S40/V50 (yom 2007 and later), V40, and Mazda 3 (BK), 5 (CR19, CW).

To press in and out the silent block on the rear axle trailing arm rapidly and professionally.

Scope of delivery (see 1)

Pos.	Part no.	Description	Qty.
A1	KL-0610-1311 A	Pressure sleeve Ø 59.3 / 52mm (Ford Focus III)	1
B1	KL-0610-1341	Support sleeve Ø 70 / 66.5mm (Ford Focus III)	1
A2	KL-0610-1332	Pressure sleeve Ø 70 / 62mm (Ford Focus I + II)	1
B2	KL-0039-1774	Support sleeve Ø 74 / 66mm (Ford Focus I + II)	1

2.2 KL-0610-134 - Set of sleeves Ford Focus III

Fits on the silent block of the rear axle trailing arm of Ford Focus (III), C-MAX (II), Grand-C-Max (II), Kuga (II), and Volvo V40.

To press in and out the silent block on the rear axle trailing arm rapidly and professionally.

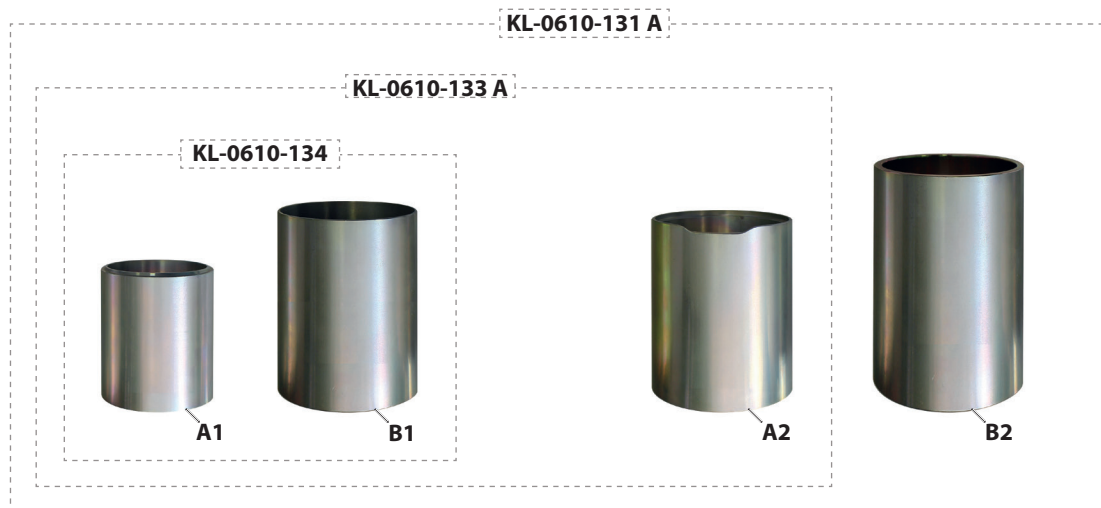
Scope of delivery (see 1)

Pos.	Part no.	Description	Qty.
A1	KL-0610-1311 A	Pressure sleeve Ø 59.3 / 52mm (Ford Focus III)	1
B1	KL-0610-1341	Support sleeve Ø 70 / 66.5mm (Ford Focus III)	1

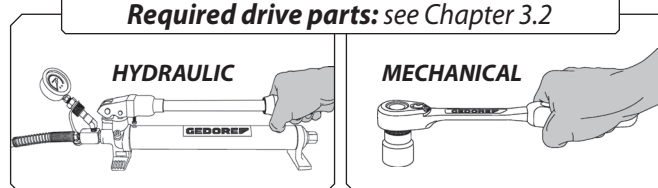
2.3 Technical Data

Maximum load capacity:12t

 1: Set of sleeves Ford Focus I, II, III



Required drive parts: see Chapter 3.2



3. PREPARATION

⚠ WARNING

Misuse and/or CR19 can cause the pressing device to slip, break and thus drop or be hurled about. This can cause **DEATH** or **SEVERE INJURIES!**

- ✔ **Prior to using** the pressing device, read and understand **all** safety instructions and warnings listed in **Chapter 1** and **always observe them for safe use!**
- ✔ **Only** use the pressing device as described in these operating instructions!
- ✔ **Before each use**, check the pressing device **carefully** for damage, loose parts or unauthorised modifications. **Never** use it if you notice any such deficiencies!
- ✔ **Always** wear your personal protective equipment (*safety goggles, protective gloves, safety shoes*) during work!

3.1 Checking the scope of delivery

First check to ensure that all parts of the set of sleeves of the scope of delivery (*see chapter 2.*) are present. Next, follow the instructions below to assemble the pressing device.

3.2 Assembling drive parts

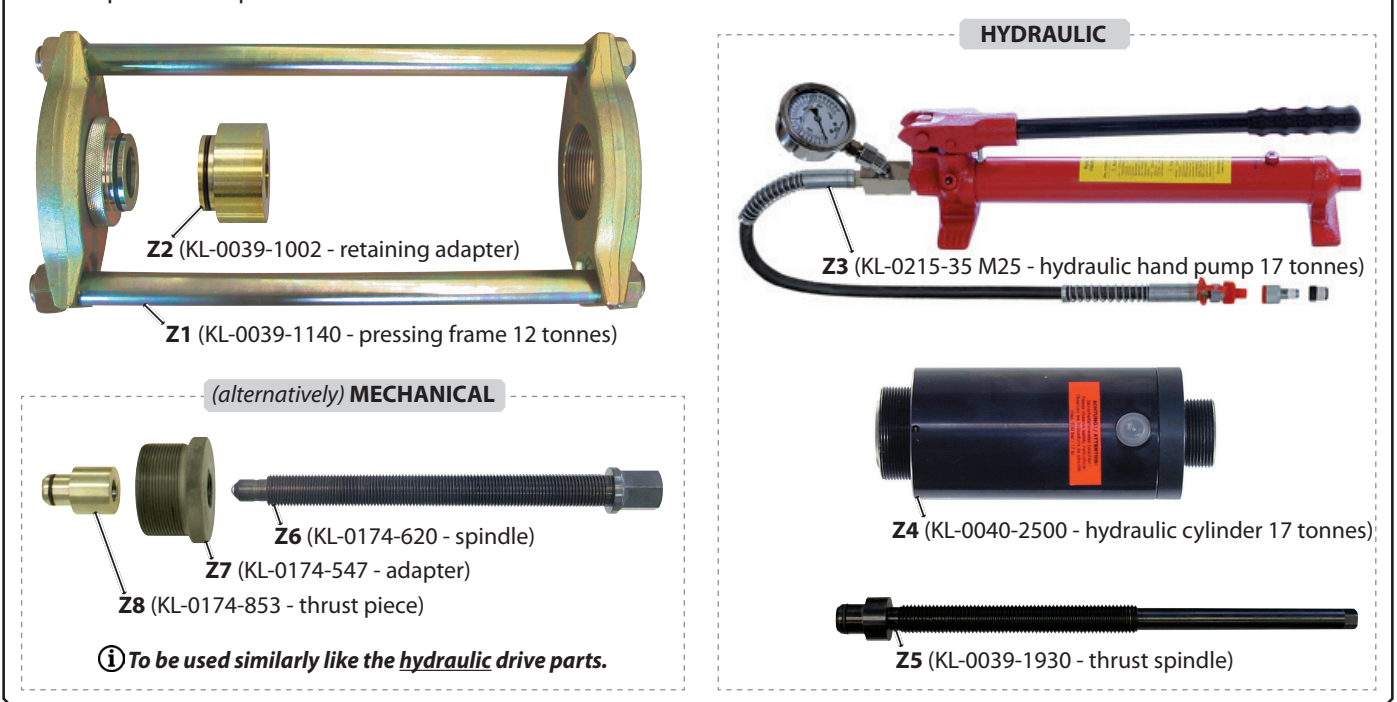
⚠ WARNING

Using a machine-operated drive can cause the pressing device to slip, break and thus drop or be hurled about. This can cause **DEATH** or **SEVERE INJURIES!**

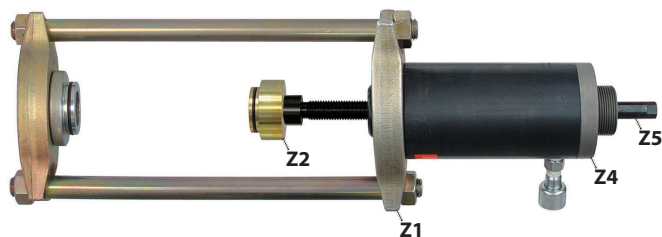
- ✔ **Never** use a machine-operated drive with an impulse or impact function (impact wrench)!
- ✔ Use the pressing device **exclusively** with a manual drive or a manually operated **GEDORE Automotive** hydraulic cylinder / pump combination with a pressure gauge for reliable pressure control!

- 1) Assemble the required drive parts for the set of sleeves as shown in **Fig. 2**.
- ① *Further drive parts can be found in the GEDORE-Automotive main catalogue.*

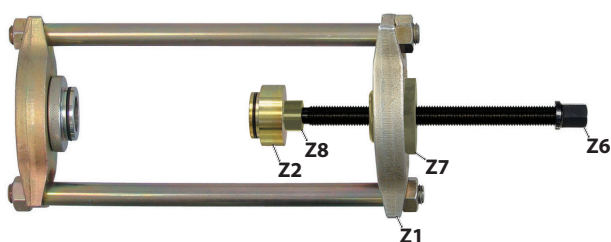
Fig. 2: Required drive parts



📷 3: Preparing the tool (*hydraulic*)

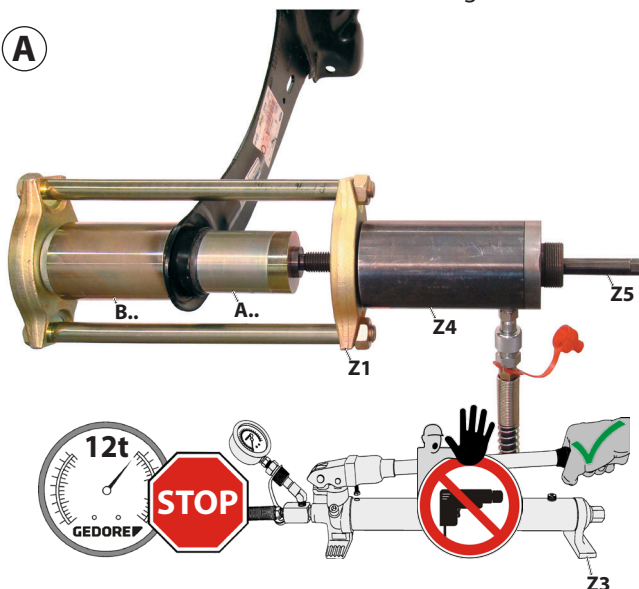


Preparing the tool (*mechanical*)

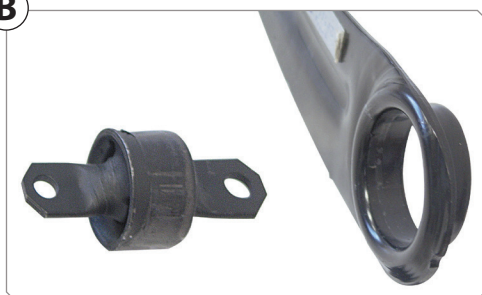


📷 4: Press out the silent block at the trailing arm.

A



B



3.3 Preparing the pressing device

1) Assemble the pressing device to suit the type of drive (*hydraulic or mechanical*) as shown in 📷 3.

ⓘ The safety retaining belt - **KL-0040-2590**, which is available as an *accessory*, or the holding device **KL-0040-258 A** make it possible to secure the pressing device against dropping.

3.4 Preparing the vehicle

1) Safely lift the vehicle and prepare all necessary parts for the following work in accordance with the manufacturer's instructions.

4) TYPICAL APPLICATION

This typical application describes the process of **hydraulically** pressing out and in a silent block on the rear axle trailing arm of a Ford Focus. Pressing out and in **mechanically** basically uses the same principle.

4.1 Removing the silent block

⚠️ WARNING

The pressing device can drop down during use. Dropping parts can cause **SEVERE INJURIES** of your head or feet!

➤ **Always** secure the pressing device against dropping, for example using the safety retaining belt - **KL-0040-2890** or the mounting device - **KL-0040-288!**

⚠️ ATTENTION

There is a risk of the silent block colliding with the support sleeve [B..] when it is pressed out.

➤ Align the support sleeve [B] such that the silent block can be pulled out without collision.

1) Position the pressing device together with the matching pressure sleeve [A..] and support sleeve [B..] as shown in 📷 4A, on the rear axle trailing arm silent block. Next, screw in the spindle [Z5] on the hydraulic cylinder [Z4] until the pressing device is firmly in contact with the silent block and the rear axle trailing arm.

⚠️ WARNING

When pressing out the silent block there is a risk of breaking the pressing frame [Z1], and thus the risk of parts flying about. This can cause **DEATH** or **SEVERE INJURIES**.

➤ Use the pressing device **exclusively** with a manual drive or a manually operated **GEDORE Automotive** hydraulic cylinder / pump combination with a pressure gauge for reliable pressure control!

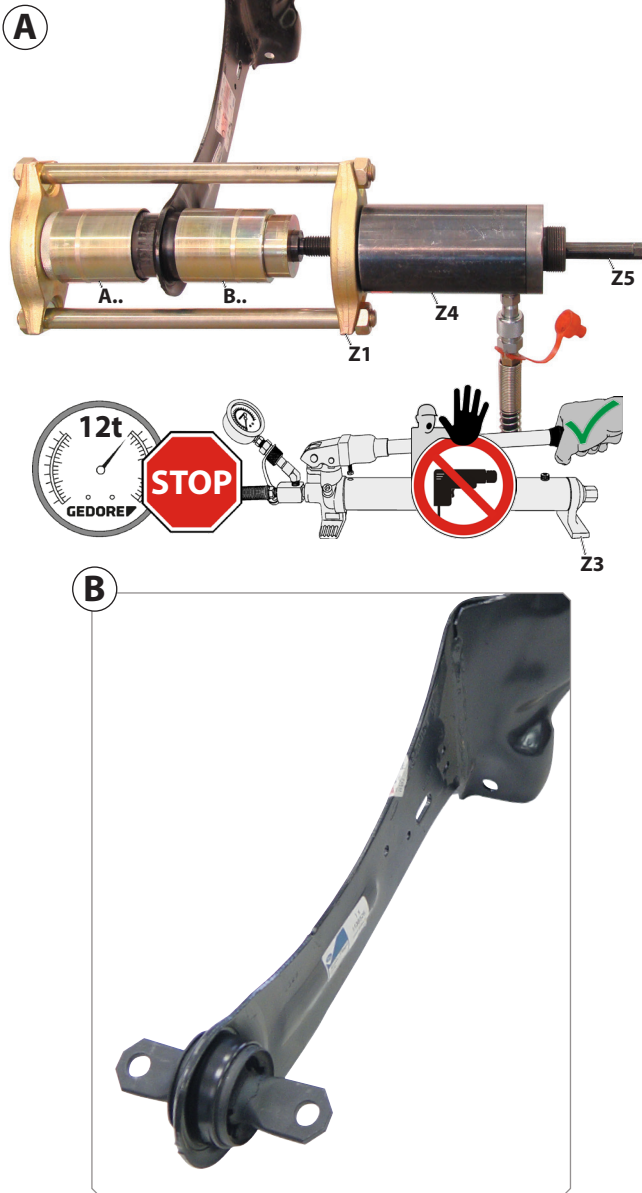
➤ **Never** exceed the **maximum loading capacity** of the pressing device of **12 tonnes!**

➤ **Never** stand in the axial extension of the pressing frame [Z1] during the process of pressing out.

2) First, connect the hydraulic pump [Z3] with the hydraulic cylinder [Z4]. To press out the silent block, actuate the hydraulic pump [Z3] 📷 4A + B now.

ⓘ Watch the pressure on the pressure gauge during the pressing-out process!

5: Press in the silent block on the trailing arm in the correct position.



6) REPAIR

⚠ WARNING

For safety reasons, stop using the pressing device when you detect any damage on it! A professional inspection and repair may only be carried out by specially trained specialist personnel at **GEDORE Automotive GmbH**. Improper repair of the pressing device can cause **DEATH** or **SEVERE INJURIES**.

7) ENVIRONMENTALLY COMPLIANT DISPOSAL

Dispose of the pressing device and the packaging material in an environmentally compatible manner and in accordance with the legal requirements. If necessary, ask your local authorities about environmentally friendly disposal options.

4.2 Installation of the silent block

⚠ WARNING

The pressing device can drop down during use. Dropping parts can cause **SEVERE INJURIES** of your head or feet!

- Always secure the pressing device against dropping, for example using the safety retaining belt - **KL-0040-2890** or the mounting device - **KL-0040-288!**

ATTENTION

There is a risk of the silent block colliding with the support sleeve [B..] when it is pressed in.

- Align the support sleeve [B] such that the silent block can be pressed in without collision.

- Position the pressing device together with the matching pressure sleeve [A..], the new silent block and the support sleeve [B..] as shown in **5A**, on the rear axle trailing arm. Next, screw in the spindle [Z5] on the hydraulic cylinder [Z4] until the pressing device is firmly in contact with the silent block and the rear axle trailing arm.

⚠ WARNING

When pressing in the silent block there is a risk of breaking the pressing frame [Z1], and thus the risk of parts flying about. This can cause **DEATH** or **SEVERE INJURIES**.

- Use the pressing device **exclusively** with a manual drive or a manually operated **GEDORE Automotive** hydraulic cylinder / pump combination with a pressure gauge for reliable pressure control!
- Never** exceed the **maximum loading capacity** of the pressing device of **12 tonnes!**
- Never** stand in the axial extension of the pressing frame [Z1] during the process of pressing out.

- First, connect the hydraulic pump [Z3] with the hydraulic cylinder [Z4]. To press in the silent block, actuate the hydraulic pump [Z3] **5A + B** now.

ⓘ When pressing in, watch the pressure on the pressure gauge and the installation position of the silent block in accordance with the manufacturer's specifications!

- Dismount the pressing device and carry out the further work on the vehicle in accordance with the manufacturer's instructions.

5) CARE AND STORAGE

ATTENTION

Improper care and storage can damage the pressing device. **Never** use cleaning agents to clean the pressing device. This could destroy the device. After use, clean all parts only with a dry and clean cleaning cloth. Never immerse the pressing device in water, solvents or cleaning liquids. To protect them against corrosion, lightly rub all metal parts after use with an anti-corrosion oil or wax that is suitable for tool care. Store the pressing device and the operating instructions in the packaging at a dry and clean place.

GEDORE-Werkzeugfabrik GmbH & Co. KG

Remscheider Straße 149
42899 - Remscheid
Postfach 120361
47873 Remscheid
GERMANY

Vertrieb DEUTSCHLAND

☎ +49 (0) 2191 / 596-0
☎ +49 (0) 2191 / 596-230
✉ info@gedore.com
🌐 www.gedore.com

Sales INTERNATIONAL

☎ +49 (0) 2191 / 596-910
☎ +49 (0) 2191 / 596-911
✉ info@gedore.com
🌐 www.gedore.com

GEDORE TOOLS, INC.

Only for USA, Canada & Mexico
Sólo para EE.UU., Canadá y México
Seulement pour les USA, le Canada et le Mexique
7187 Bryhawke Circle, Suite 700, North Charleston, SC 29418, USA

☎ +1-843 / 225 50 15
☎ +1-843 / 225 50 20
✉ info@gedoretools.com
🌐 www.gedoretools.com

Worldwide GEDORE service centers and offices are listed on the Internet at: www.gedore.com

GEDORE Automotive GmbH

Breslauer Straße 41
78166 - Donaueschingen
Postfach 1329
78154 Donaueschingen
GERMANY

Vertrieb DEUTSCHLAND

☎ +49 (0) 771 / 8 32 23-0
☎ +49 (0) 771 / 8 32 23-90
✉ info.gam@gedore.com
🌐 gedore-automotive.com



www.gedore-automotive.com