



# Pneumatic Pumps

**PRESSOL**



## Experience

- ▶ *since 1914*
- ▶ *continuous process of improvement*
- ▶ *latest technology and methods used in production*
- ▶ *100% quality controls*
- ▶ *failure rate of less than 1.5 ‰*
- ▶ *endurance tests with 14 million double strokes = 980.000 litres of oil*

## Performance

- ▶ *robust and compact construction*
- ▶ *long lifetime*
- ▶ *high reliability*
- ▶ *low air consumption*
- ▶ *low noise levels*

## Areas of use

- ▶ *in garages and HGV workshops*
- ▶ *in mines and quarries*
- ▶ *at airports and at sea*
- ▶ *chemical and food industry*

## Quality

- ▶ *only materials of the highest quality are used*
- ▶ *strict adherence to DIN- and European safety standards*
- ▶ *all pumps are manufactured using the latest CNC technology and are subject to quality controls*

*Hydraulic pump for scissor lifts.*



*From our own production.  
Above the machine work on  
a pneumatic pump 5:1 on a  
machining centre.*

*All our pumps can be used for various applications and are easily  
combined with other accessories. Examples of applications are  
illustrated on pages 8 to 11 of this prospectus.*





## 1:1

## 3:1

## 5:1



### 19 135

Pneumatic pump 1:1  
SRL 860-200/220 l container

### 19 135 843

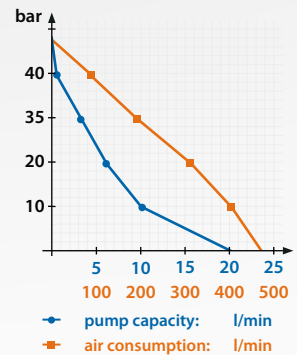
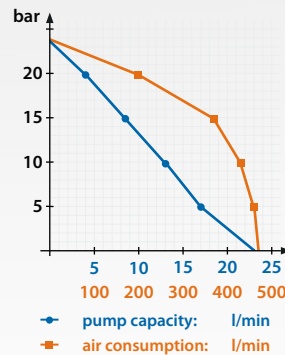
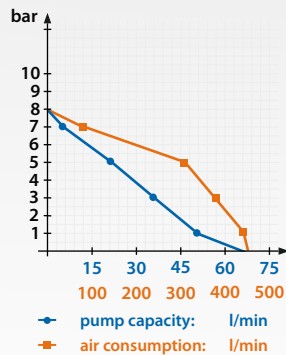
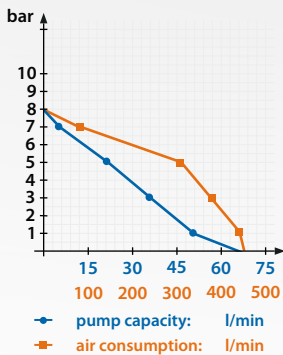
Pneumatic pump 1:1-brass  
SRL 860-200/220 l container

### 19 235

Pneumatic pump 3:1-NEF  
SRL 860-200/220-l-Behälter

### 19 335

Pneumatic pump 5:1-DW  
SRL 860-200/220 l container



### List of abbreviations

AAS automatic drip stop nozzle  
AMS manual drip stop nozzle  
AR discharge spout  
AS discharge hose  
BE container

DW double-acting  
EF calibratable  
EFA calibratable acc. to Austrian govt. regulation  
EFL calibratable, air eliminator  
EFS calibratable, air eliminating foot-valve

FAV drum cover  
FB mobile  
FKM Viton®  
HS high pressure hose  
HZ flow meter  
Me brass

# 10:1

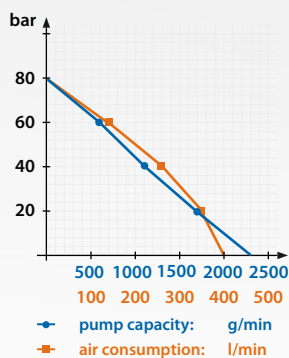
# 15:1

# 50:1



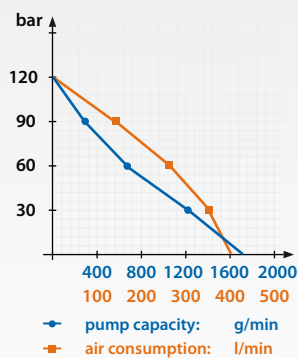
### 18 516 051

Pneumatic grease pump 10:1  
SRL 1000-200-kg container



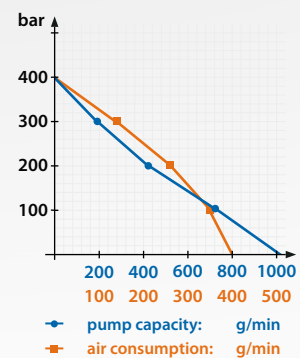
### 18 616 051

Pneumatic grease pump 15:1  
SRL 1000-200-kg container



### 18 716 051

Pneumatic grease pump 50:1  
SRL 1000-200-kg container



NBR nitrile-butadiene rubber (Buna®-Buna-N®)  
NEF not calibrate  
O open, not encased  
PNP pneumatic pump  
PTFE polytetrafluoroethylene (Teflon®)

PU polyurethane  
SAR hose reel  
SR stationary  
SRL suction pipe length, specs always in mm  
WA trolley

WB wall and floor mounting  
WM wall mounting  
WS head of water  
WG air maintenance unit  
ZSA centralized lubrication systems



**Pneumatic pump 1:1**

**Pneumatic pump/brass 1:1**

**Pneumatic pump 3:1**

Art. No.	19 135	19 135 843	19 235
<b>External dimensions</b>			
Length: motor/complete	375 mm / 1215 mm	375 mm / 1215 mm	360 mm / 1200 mm
Maximum diameter	130 mm	130 mm	130 mm
Weight: motor/complete	4,3 kg / 6,8 kg	4,3 kg / 9,2 kg	3,8 kg / 5,2 kg
<b>Technical Data</b>			
Pressure ratio	<b>1 : 1</b>	<b>1 : 1</b>	<b>3 : 1</b>
Suction pipe	860 mm	860 mm	860 mm
Maximum pressure	10 bar	10 bar	10 bar
Minimal pressure	2 bar	2 bar	2 bar
Recommended air pressure	8 bar	8 bar	8 bar
Cylinder capacity motor	220 cm <sup>3</sup>	220 cm <sup>3</sup>	220 cm <sup>3</sup>
Cylinder capacity pump	220 cm <sup>3</sup>	220 cm <sup>3</sup>	70 cm <sup>3</sup>
Quantity of strokes at 8 bar at a free-flow	240 / min	240 / min	260 / min
Quantity of strokes at 8 bar at a free-flow	66 l / min	66 l / min	22 l / min
Pump pressure at 8 bar air pressure	8 bar	8 bar	24 bar
Air consumption at 8 bar air pressure	450 l / min	450 l / min	470 l / min
Length of discharge pipe work	Depends on size of installation	Depends on size of installation	Depends on size of installation
Max. suction height	6-m-WS, G-1" drum adapter	6-m-WS, G-1" drum adapter	6-m-WS, G-3/4" drum adapter
Compressed air connection	G 1/4" i	G 1/4" i	G 1/4" i
Oil / grease connection suction side	G 1" i	G 1" i	G 3/4" i
Oil / grease connection pressure side	G 3/4" a	G 3/4" a	G 1/2" a
Connection container	G 2" a, drum adapter	G 2" a, drum adapter	G 2" a, drum adapter
Noise level on no load running acc. to ISO 9614-2 at a dist. of 2 m	78 db (A)	78 db (A)	78 db (A)
Noise level under load acc. to ISO 9614-2 at a distance of 2 m	77 db (A)	77 db (A)	77 db (A)
General application	Pump designed for feeding liquid, non-viscous, self-lubricated media like Diesel, fuel oil, engine oil from delivery barrels or tanks	Suitable for not diluted media as coolant, anti-freeze	Pump for feeding motor, gear and hydraulic oil, from original barrels or tanks
Current use	As barrel pump (200 liter drum) with 900 mm suction pipe, 4 m supply hose and nozzle	As barrel pump (200 liter drum) with 900 mm suction pipe, 4 m supply hose and nozzle	As pump for wall-mounting with suction set, suction pipe for 200 liter barrel, hose reel and digital oil meter
Viscosity of discharged liquid	Oils up to ISO VG 15 SAE 5	Oils up to ISO VG 15 SAE 5	Oils up to SAE 90
Discharged liquid	diesel and oil	Cooling liquid, antifreeze	Motor, gear and hydraulic oil
Performance graph	Pressure: 8 bar Test medium: Diesel Test medium temperature: 15 °C Suction pipework: 1 m / G 1" Delivery pipework: 0,2 m / G 3/4"	Pressure: 8 bar Test medium: Diesel Test medium temperature: 15 °C Suction pipework: 1 m / G 1" Delivery pipework: 0,2 m / G 3/4"	Pressure: 8 bar Test medium: SAE 15 W 40 Test medium temperature: 15 °C Suction pipework: 1 m / G 3/4" Delivery pipework: 0,2 m / G 1/2"
Time duration for 1 complete container draining	200 l diesel in 3 minutes	200 l diesel in 3 minutes	200 l oil in 9 minutes
Special notes	-	PPump body in brass	-
Sealing material	PU, NBR	PU, NBR, FKM	PU, NBR



<b>Pneumatic pump 5:1</b>	<b>Pneumatic pump 10:1</b>	<b>Pneumatic pump 15:1</b>	<b>Pneumatic pump 50:1</b>
<b>19 335</b>	<b>18 516 051</b>	<b>18 616 051</b>	<b>18 716 051</b>
360 mm / 1220 mm	225 mm / 1225 mm	225 mm / 1225 mm	225 mm / 1225 mm
130 mm	130 mm	130 mm	130 mm
4 kg / 8,5 kg	3,4 kg / 8,2 kg	3,4 kg / 11,3 kg	3,4 kg / 11,3 kg
<b>5 : 1</b>	<b>10 : 1</b>	<b>15 : 1</b>	<b>50 : 1</b>
860 mm	1000 mm	1000 mm	1000 mm
10 bar	10 bar	10 bar	10 bar
2 bar	2 bar	2 bar	2 bar
8 bar	8 bar	8 bar	8 bar
220 cm <sup>3</sup>	220 cm <sup>3</sup>	220 cm <sup>3</sup>	220 cm <sup>3</sup>
70 cm <sup>3</sup>	22 cm <sup>3</sup>	13 cm <sup>3</sup>	8 cm <sup>3</sup>
270 / min	Grease: 114 / min – silicone grease: 30/min	220 / min	220 / min
20 l / min	Grease: 2300 g / min – silicone grease: 610 g / min	1700 g / min	1100 g / min
40 bar	80 bar	120 bar	400 bar
470 l / min	400 l / min	400 l / min	400 l / min
Depends on size of installation	Depends on size of installation	Depends on size of installation	Depends on size of installation
6-m-WS, G-3/4"-drum adapter	The pump ist constructed to be operated directly at the point of suction	The pump ist constructed to be operated directly at the point of suction	The pump ist constructed to be operated directly at the point of suction
G 1/4" i	G 1/4" i	G 1/4" i	G 1/4" i
G 3/4" i	Ø 35 mm	Ø 35	Ø 35
G 1/2" a	G 1/4" a	G 1/4" a	G 1/4" a
G 2" a, drum adapter	–	–	–
78 db (A)	78 db (A)	78 db (A)	78 db (A)
77 db (A)	77 db (A)	77 db (A)	77 db (A)
Double-acting pump for feeding motor, gear and hydraulic oil, from original barrels or tanks	Pump for feeding lubrication- and silicone grease	Pump for feeding lubrication and multipurpose greases	Pump for feeding lubrication and multipurpose greases
As pump for wall-mounting with suction set, suction pipe for 1000 liter tank, hose reel and digital oil meter	As pump for 200-kg-barrel, with 4 m discharge hose, Z swivel and grease gun, to be fitted on trolley	As pump for 200-kg-barrel, with 4 m discharge hose, Z swivel and grease gun, to be fitted on trolley	As pump for 200-kg-barrel, with 4 m discharge hose, Z swivel and grease gun, to be fitted on trolley
Oils up to SAE 140	Greases, from NLGI 0 bis NLGI 3	Greases, from NLGI 0 up to NLGI 3	Greases, from NLGI 0 up to NLGI 2
Motor, gear and hydraulic oil	Lubrication and silicone grease	Lubrication and multipurpose greases	Lubrication and multipurpose greases
Pressure: 8 bar	Pressure: 8 bar	Pressure: 8 bar	Pressure: 8 bar
Test medium: SAE 15 W 40l	Test medium: Renolit LZR 2,	Test medium: AVILUB EP 3	Test medium: Rinolit LZR2l
Test medium temperature: 15 °C	Unisilikon GLK 112 e	Test medium temperature: 15 °C	Test medium temperature: 15 °C
Suction pipework: 1 m / G 3/4"	Test medium temperature: 15 °C	Delivery pipework: 0,2 m / G 1/4"	Delivery pipework: 0,2 m / G 1/4"
Delivery pipework: 0,2 m / G 1/2"	Delivery pipework: 0,2 m / G 1/4"		
200 l oil in 14 minutes	50 kg grease in 22 minutes	50 kg grease in 35 minutes	50 kg grease in 50 minutes
–	–	–	–
PU, NBR	PU, PTFE, NBR	PU, NBR	PU, NBR

**Applications for oil systems**



**19 235 951**  
Pneumatic pump 3:1-EFS  
SRL 860-200/220-L-container



**19 365 951**  
Pneumatic pump 5:1-DW-EF  
SRL 1200-mounting on tanks



**19 235 135**  
Pneumatic pump 3:1-EFA  
SRL 860-200/220-L-container



**19 265 030**  
Pneumatic pump 3:1-EFL  
SRL 1200-mounting on tanks



**19 000 955**  
Oil supply system-SR-NEF-PNP 3:1-SAR-O  
SRL 860/1600-WM-HZ-AS-AMS



**19 235 888**  
Oil supply system-SR-NEF-PNP 3:1-WG  
SRL 860-200/220-I-BE-HZ-AR-AAS



## Applications for oil systems



**19 185**

Pneumatic pump 1:1-NEF  
Wall mounting



**19 185 600**

Pneumatic pump 1:1-NEF-set  
SRL 860-wall mounting



**19 335 600**

Pneumatic pump 5:1-DW-NEF-set  
SRL 860-200/220-L-container



**19 244 551**

Oil supply system-mobile (17 009)  
NEF-3:1-4 m, SRL 860-200/220-I-BE  
HZ-AS-AMS



**19 257 551**

Oil supply system-mobile-NEF  
PNP 3:1-SAR-O, SRL 860-200/220-I-BE  
HZ-AS-AMS



**27 859**

Oil dispensing unit-mobile-NEF  
75 l-pneumatically operated

## Applications for waste oil systems



**19 000 335**  
Waste oil suction system  
PNP 5:1 to suit garage service pits



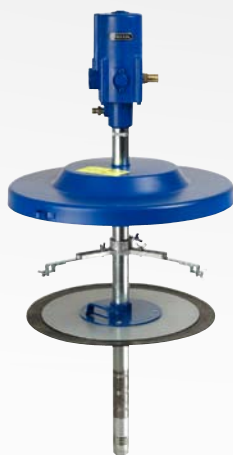
**27 410**  
Waste oil drainer-/suction unit-75 l  
Mobile-pneumatic pump 1:1



**19 800**  
Waste oil suction system-stationary,  
PNP 5:1-suction hose 2 m

[www.pressol.com](http://www.pressol.com) → Products → Garage equipment → Waste oil disposal

## Applications for grease systems



**18 760 051**  
Grease supply system-SRL 700  
50-kg-BE-Ø 335-385 mm



**18 764 051**  
Grease supply system-stationary  
50-kg-BE-Ø 335-385 mm-4-m-HS



**27 846**  
Grease supply system-FB-FAV-50/60-kg-BE  
Ø 335-385 mm-4-m-HS

[www.pressol.com](http://www.pressol.com) → Products → Garage equipment → Grease supply systems

## Applications for grease systems



**18 611 051**  
Pneumatic grease pump 15:1  
SRL 600-20-30-kg-BE



**18 713 051**  
Pneumatic grease pump 50:1  
SRL 700-25-60-kg-BE

**19 000 532**  
Grease supply system-FB-WA (17 008)  
50-kg-BE-Ø 335-385 mm-4-m-HS

**18 766 051**  
Grease supply system-FB-WA (17 008)  
50-kg-BE-Ø 335-385 mm-4-m-HS



**18 786 051**  
Grease supply system-FB-WA (17 009)  
200-kg-BE-Ø 540-590 mm-4-m-HS



**18 788 051**  
Grease supply system-FB-WA (17 009)  
200-kg-BE-Ø 540-590 mm-SAR

[www.pressol.com](http://www.pressol.com)



**PRESSOL Schmiergeräte GmbH** · Am Gansacker 10 C · 79224 Umkirch · Germany  
Tel.: +49 7665 9346-000 · Fax: +49 7665 9346-130 (domestic) · Fax: +49 7665 9346-120 (export)  
E-Mail: [info@pressol.com](mailto:info@pressol.com)

